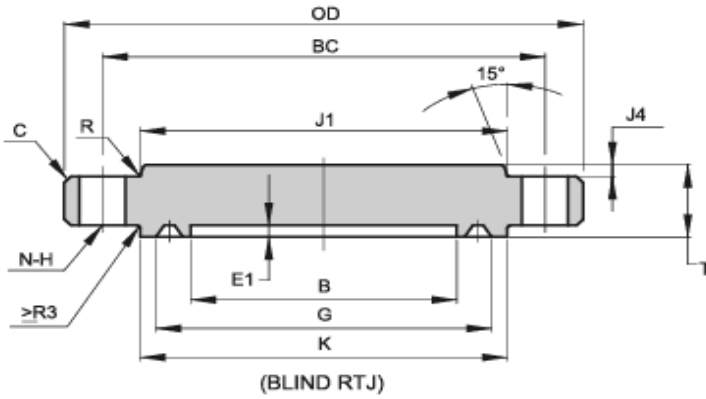


API 6A TYPE 6BX 5000 PSI BLIND FLANGES



| Size | OD | C | E1 | G | K | T | J1 | J4 | R | BC | N | H | BX |
|---------|-----|---|------|-------|-----|-------|-------|------|----|-------|----|----|-----|
| 13 5/8" | 675 | 6 | 14.3 | 408 | 457 | 112.8 | 481 | 23.9 | 16 | 590.6 | 16 | 45 | 160 |
| 16 3/4" | 770 | 6 | 8.3 | 478.3 | 535 | 130.2 | 555.6 | 17.5 | 19 | 676.3 | 16 | 51 | 162 |
| 18 3/4" | 905 | 6 | 18.3 | 563.5 | 627 | 165.9 | 674.7 | 19.1 | 16 | 803.3 | 20 | 54 | 163 |
| 21 1/4" | 990 | 6 | 19.1 | 632.6 | 702 | 181 | 758.8 | 22.4 | 18 | 885.8 | 24 | 54 | 165 |

Note:

1. RING NUMBER BX,
2. C should be the max value
3. Tolerance and Ring Gasket according to API 6A-20TH